

Luminux®

unipro®

Advanced solutions for lighting.

The unipro® lighting track system is a great choice when planning lighting for private and public buildings such as offices, shopping centers, shops, museums, gyms and restaurants.

unipro® consists of high quality products, modern design and smooth installation. The versatile lighting track system offers flexibility in designing spotlight systems. The system provides you with impressive and state-optimized lighting - exactly where and how its needed.

The unipro® lighting track system includes surface and recessed 3-circuit lighting tracks as well as Control-DALI lighting tracks, adapters and a wide range of mounting accessories. The standard lengths of the lighting tracks are 2, 3 and 4 meters. Due to its universal and modular design, the system is easy to expand and adapt to the customer's wishes and requirements. Adjustable and reversible L-corners with changeable earthing options are the pearls of the product development.

The unipro® lighting track system has been tested in accordance with EN 60570 and EN 60598 standards. In production each product is tested after manufacture.

In fire situations, smoke formation is minor with halogen free lighting tracks and installation parts. Halogen free lighting track parts will not release any fire gases harmful for health. It is advisable to use halogen free products especially in premises full of people and challenging evacuation conditions. Preferred installation locations are for example kindergartens, restaurants, schools, shopping centers and other public buildings. Halogen free product is also an ecological choice.

Halogen free products within unipro® lighting track family are Control-DALI lighting tracks, Control-DALI accessories as well as all the brackets without any plastic parts.

www.unipro.fi



"Lighting is easily adjustable for both lunch and coffee visitors, party arrangements as well as social evenings in the restaurant."

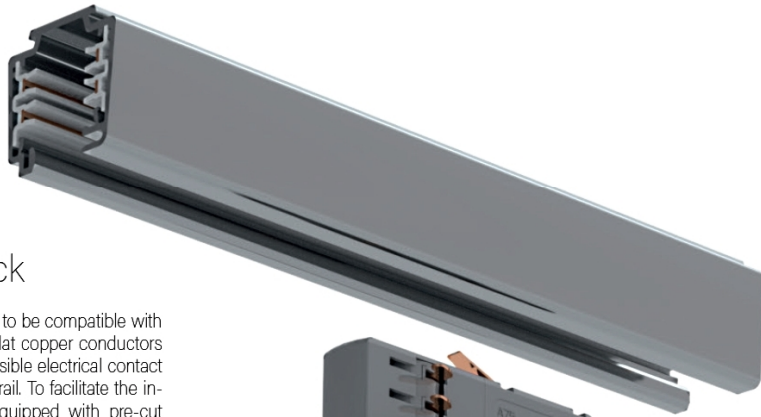
Restaurant Nallikari

Beach restaurant which is build in 1975 and restored to new light brilliance. Special color unipro® lighting tracks has been chosen to complete the harmonic, beautiful lighting at the restaurant ceiling. Red unipro® lighting tracs combined with black spotlights blend in gracefully to the restaurant atmosphere.

Luminux®

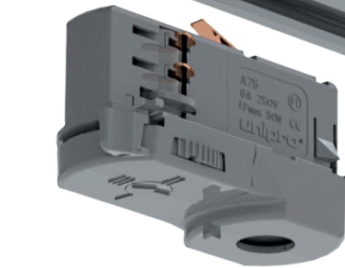
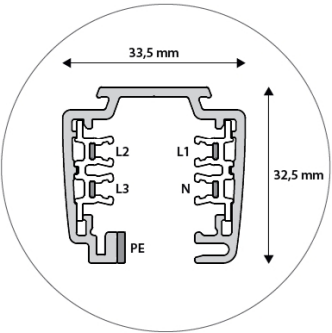
unipro®





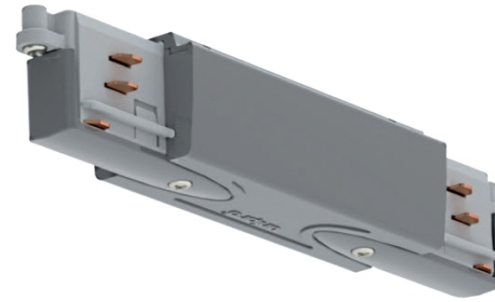
Versatile lighting track

The unipro® lighting tracks are designed to be compatible with the most common spotlight systems. Flat copper conductors on the contact rail provide the best possible electrical contact between the adapters and the contact rail. To facilitate the installation, unipro® lighting tracks are equipped with pre-cut mounting holes at half a meter intervals.



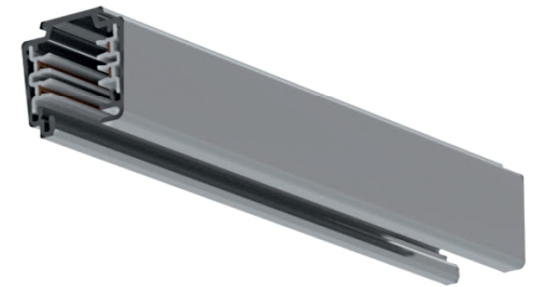
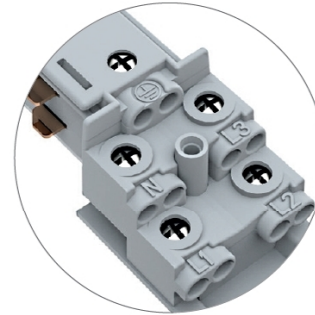
Universal adapter

The unipro® A75 luminaire adapter is designed to be compatible with not only unipro® but also with the most of the other 3-circuit lighting tracks. A80BT bluetooth control unit is designed for easy wireless control – it can be installed to both new and already existing lighting track systems.



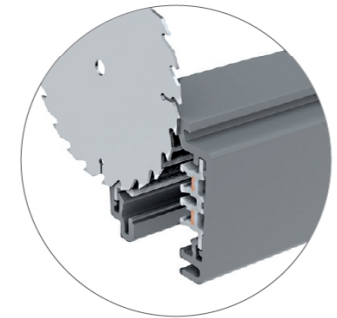
Fast to connect

The unipro® connection units have reliable and easy-to-use screw terminals for max. 2,5mm² solid or braided wires. Power supply option is available on most of the connector pieces, such as L-, T- and X-pieces.



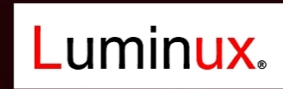
Easy to cut

The standard lengths of the unipro® lighting tracks are 2, 3 and 4 meters. If necessary, the lighting track can be shortened to the desired length even on site. There is no need to bend or tool the copper conductors of the T3 lighting track after the cutting.



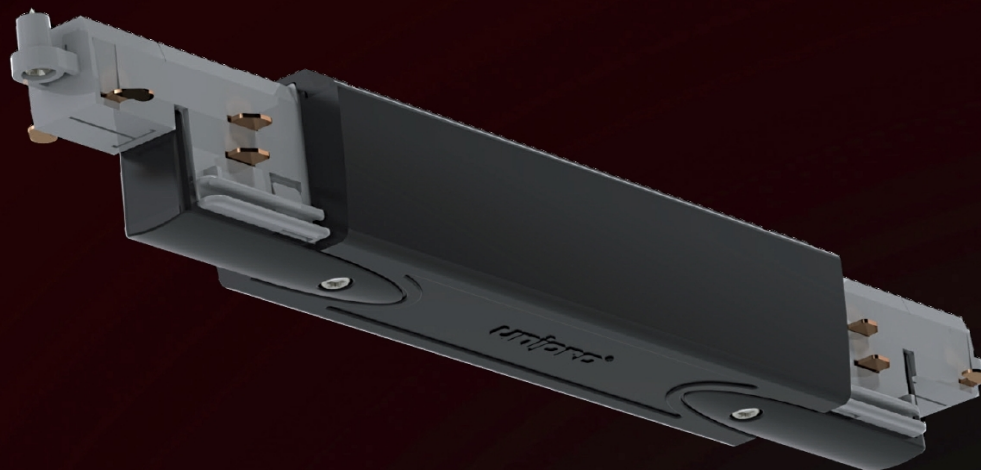
unipro®

Control-DALI



Almost limitless possibilities

- improving of atmosphere and comfort
- emphasizing architectural appearance
- exactly adequate lighting strengths
- energy saving, possibility for energy consumption monitoring
- cost-effective
- less components needed
- bidirectional communication enables ie malfunction information from the devices
- flexible both in the planning phase and in use
- excellent disturbance tolerance
- lighting tracks' DALI conductors are polarization free



unipro® A80BT control unit

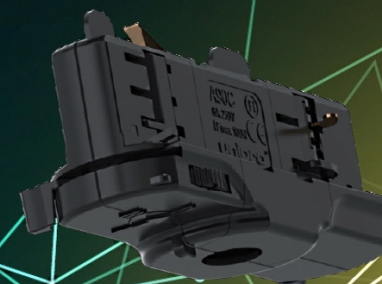


- Optimal choice for small and medium-size destinations.
- Quick to install to the new or existing 3-circuit lighting track systems. Supports flexibly existing lights.
- Does not require a separate server; uses the latest Bluetooth technology.
- Controllable with a smart device.
- Reliable, password protected system.
- Easy and fast initialization, added to perfectly simple usage.

unipro® Control-DALI

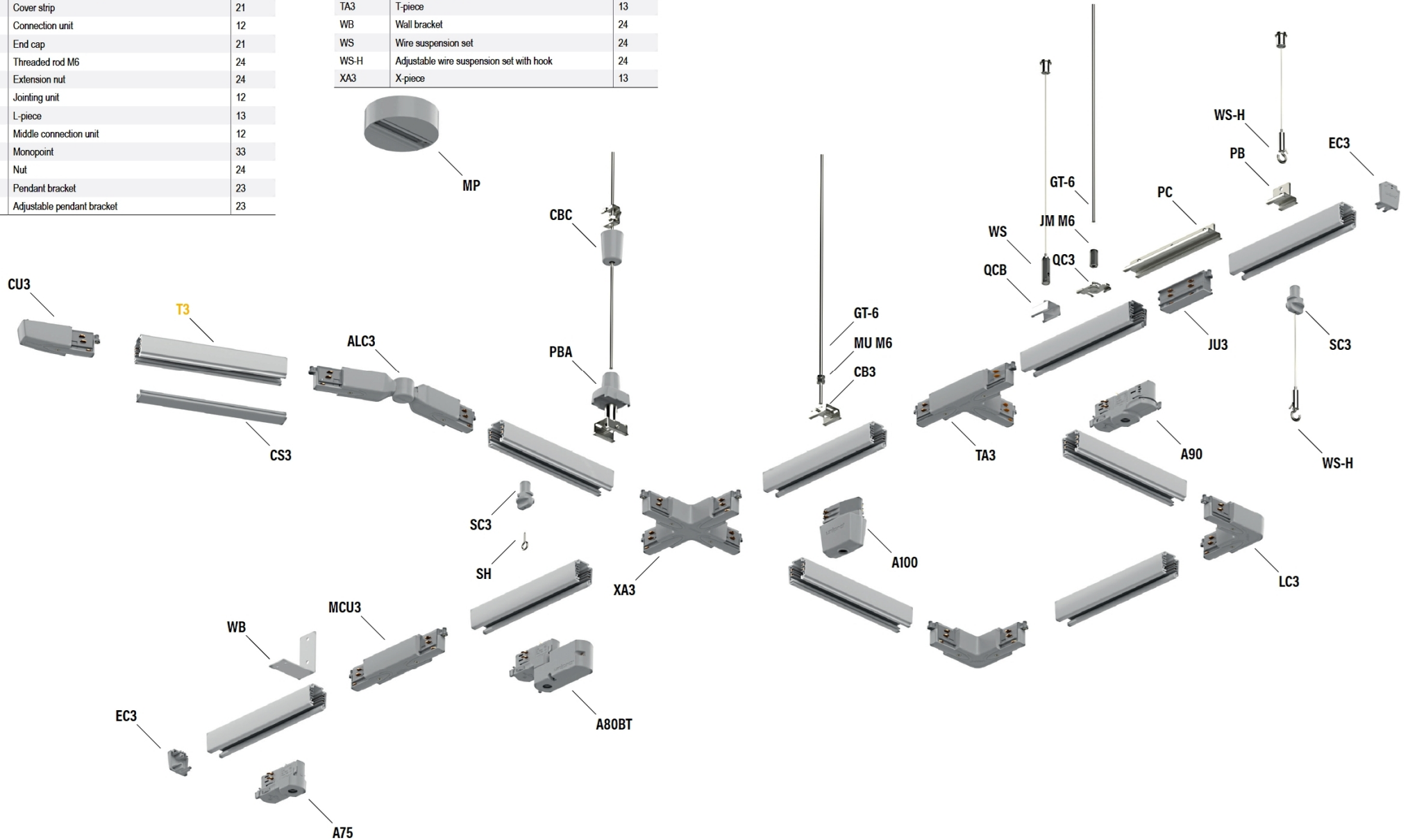


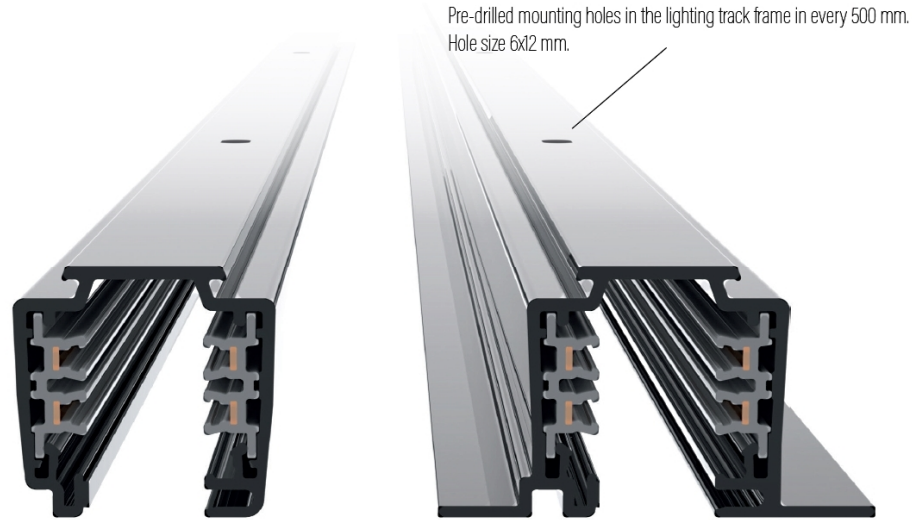
- Practical for big projects, where a wide lighting track network is desired to be controlled centrally.
- DALI (Digital Addressable Lighting Interface) is a standard for digital control of lighting.
- Enables ia controlling of DALI based devices.
- Describes digital communication between the lighting devices.
- Created especially for lighting controlling.
- Halogen free: lighting tracks and accessories.



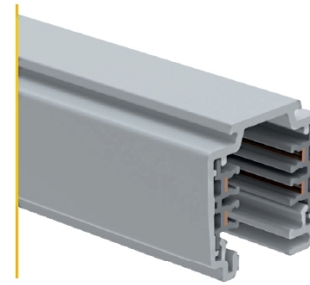
Name	Product	Page
A100	Power take-off adapter	26
A75	Luminaire adapter	31
A80BT	Bluetooth control unit	31
A90	Luminaire adapter	31
ALC3	Adjustable corner piece	13
CBC	Ceiling bracket with cup	23
CS3	Cover strip	21
CU3	Connection unit	12
EC3	End cap	21
GT-6	Threaded rod M6	24
JM M6	Extension nut	24
JU3	Jointing unit	12
LC3	L-piece	13
MCU3	Middle connection unit	12
MP	Monopoint	33
MU M6	Nut	24
PB	Pendant bracket	23
PBA	Adjustable pendant bracket	23

Name	Product	Page
PC	Pendant coupler	23
QC3	Quick connector	22
QCB	Quick ceiling bracket	22
SC3	Suspension clamp	24
SH	Suspension hook	24
T3	3-circuit lighting track	11
TA3	T-piece	13
WB	Wall bracket	24
WS	Wire suspension set	24
WS-H	Adjustable wire suspension set with hook	24
XA3	X-piece	13





Surface 3-phase lighting tracks



Code	Name	Product
1459102	UNIPRO T32W	3-phase lighting track, white, 2 meters (surface)
1459103	UNIPRO T33W	3-phase lighting track, white, 3 meters (surface)
1459104	UNIPRO T34W	3-phase lighting track, white, 4 meters (surface)
1459232	UNIPRO T32G	3-phase lighting track, grey, 2 meters (surface)
1459233	UNIPRO T33G	3-phase lighting track, grey, 3 meters (surface)
1459234	UNIPRO T34G	3-phase lighting track, grey, 4 meters (surface)
1459302	UNIPRO T32B	3-phase lighting track, black, 2 meters (surface)
1459303	UNIPRO T33B	3-phase lighting track, black, 3 meters (surface)
1459304	UNIPRO T34B	3-phase lighting track, black, 4 meters (surface)
1459202	UNIPRO T32AD	3-phase lighting track, anodised, 2 meters (surface)
1459203	UNIPRO T33AD	3-phase lighting track, anodised, 3 meters (surface)
1459204	UNIPRO T34AD	3-phase lighting track, anodised, 4 meters (surface)

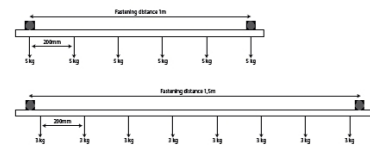
16 A | 250/400 VAC | 50 Hz | CLASS 1IP20

Features

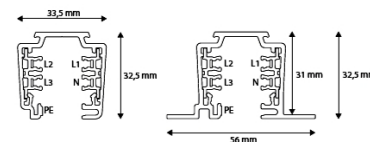
unipro® lighting tracks

Materials	The track's frame material is extruded aluminium. The insulation profiles inside the frame are plastic. The phase and neutral conductors are 2,5 mm ² rectangular copper, the earth contact is cut on the aluminium frame. The material of the plastic accessories is self-extinguishing polycarbonate, class V0. The surface treatment alternatives are powder-coated white (RAL9010), grey (RAL 7040), black (RAL9005) and anodised natural colour. All other painted RAL-colours and Decoral®-coatings are available by special order.
Conductors	Three phase conductors (L1, L2 ja L3), neutral (N) and ground (PE).
Protection class	Protection class 1 IP20.
Other	Can be cut on site to suitable dimensions. No need to bend or tool the power conductors after cutting.
Quality and safety	Tested in accordance with the standards EN60570 and EN60598.

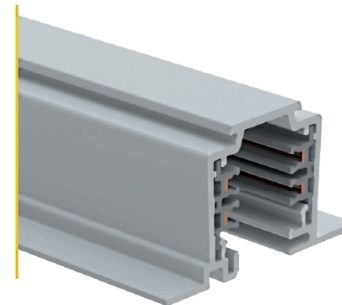
Load-bearing capacity:



Profile dimensions:



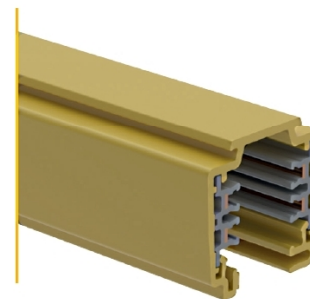
Recessed 3-phase lighting tracks



Code	Name	Product
1459112	UNIPRO T32FW	3-phase lighting track, white, 2 meters (recessed)
1459113	UNIPRO T33FW	3-phase lighting track, white, 3 meters (recessed)
1459114	UNIPRO T34FW	3-phase lighting track, white, 4 meters (recessed)
1459182	UNIPRO T32FG	3-phase lighting track, grey, 2 meters (recessed)
1459183	UNIPRO T33FG	3-phase lighting track, grey, 3 meters (recessed)
1459184	UNIPRO T34FG	3-phase lighting track, grey, 4 meters (recessed)
1459312	UNIPRO T32FB	3-phase lighting track, black, 2 meters (recessed)
1459313	UNIPRO T33FB	3 phase lighting track, black, 3 meters (recessed)
1459314	UNIPRO T34FB	3-phase lighting track, black, 4 meters (recessed)
1459212	UNIPRO T32FAD	3-phase lighting track, anodised, 2 meters (recessed)
1459213	UNIPRO T33FAD	3-phase lighting track, anodised, 3 meters (recessed)
1459214	UNIPRO T34FAD	3-phase lighting track, anodised, 4 meters (recessed)

16 A | 250/400 VAC | 50 Hz | CLASS 1IP20

Painted (RAL) and coated (Decoral®) 3-phase lighting tracks

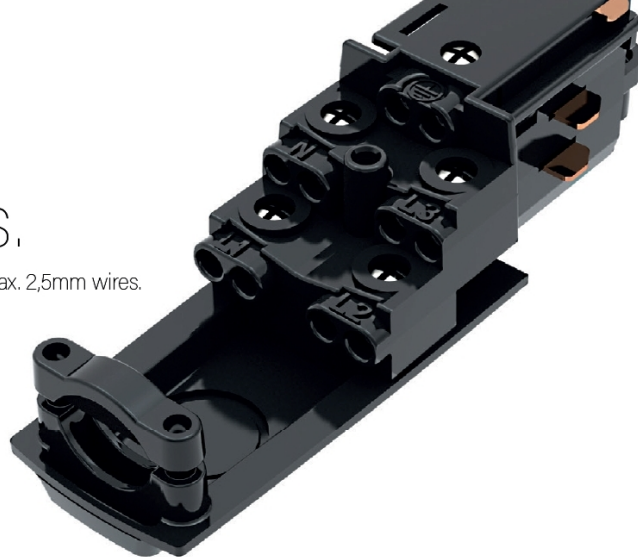


Code	Name	Product
1459132	UNIPRO T32D	3-phase lighting track, decoral®, 2 meters (surface)
1459133	UNIPRO T33D	3-phase lighting track, decoral®, 3 meters (surface)
1459134	UNIPRO T34D	3-phase lighting track, decoral®, 4 meters (surface)
1459142	UNIPRO T32S	3-phase lighting track, colored RAL, 2 meters (surface)
1459143	UNIPRO T33S	3-phase lighting track, colored RAL, 3 meters (surface)
1459144	UNIPRO T34S	3-phase lighting track, colored RAL, 4 meters (surface)
1459172	UNIPRO T32FS	3-phase lighting track, colored RAL, 2 meters (recessed)
1459173	UNIPRO T33FS	3-phase lighting track, colored RAL, 3 meters (recessed)
1459174	UNIPRO T34FS	3-phase lighting track, colored RAL, 4 meters (recessed)

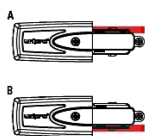
16 A | 250/400 VAC | 50 Hz | CLASS 1IP20

Versatile accessories.

High quality screw terminals for max. 2,5mm wires.



Connection unit unipro® CU3



Code	Name	Product
1459121	UNIPRO CU3AW	Connection unit, white (earthing A)
1459122	UNIPRO CU3BW	Connection unit, white (earthing B)
1459221	UNIPRO CU3AG	Connection unit, grey (earthing A)
1459222	UNIPRO CU3BG	Connection unit, grey (earthing B)
1459321	UNIPRO CU3AB	Connection unit, black (earthing A)
1459322	UNIPRO CU3BB	Connection unit, black (earthing B)

Power supply option. Select the correct earthing option. Screw terminals for 3x1,5mm² - 5x2,5mm² wires. Compatible with 3-circuit system.

Middle connection unit unipro® MCU3



Code	Name	Product
1459131	UNIPRO MCU3W	Middle connection unit, white
1459231	UNIPRO MCU3G	Middle connection unit, grey
1459331	UNIPRO MCU3B	Middle connection unit, black

Power supply option. Screw terminals for 3x1,5mm² - 5x2,5mm² wires. Compatible with 3-circuit system.

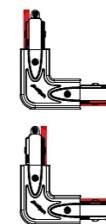
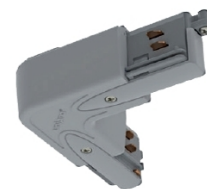
Joining unit unipro® JU3



Code	Name	Product
1459199	UNIPRO JU3	Joining unit

Joining unit for unipro® -T3 series lighting tracks. Product comes with grey and black covers, cover can be installed by pressing it on top of the joining unit. Compatible with 3-circuit system.

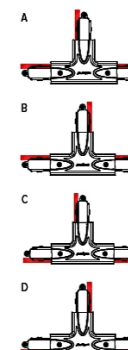
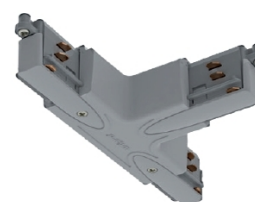
L-piece unipro® LC3



Adjustable corner unipro® ALC3



T-piece unipro® TA3



Code	Name	Product
1459141	UNIPRO LC3W	L-piece, white
1459241	UNIPRO LC3G	L-piece, grey
1459341	UNIPRO LC3B	L-piece, black

Power supply option. The earthing line position can be changed on site, by screwing the lid open, turning the frame by 180°, and by screwing the lid back on. Screw terminals for 3x1,5mm² - 5x2,5mm² wires. Compatible with 3-circuit system.

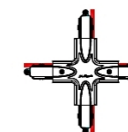
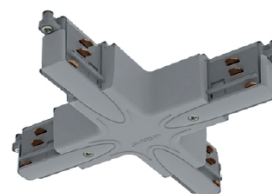
Code	Name	Product
1459151	UNIPRO ALC3W	Adjustable corner, white
1459251	UNIPRO ALC3G	Adjustable corner, grey
1459351	UNIPRO ALC3B	Adjustable corner, black

Horizontal adjustment range 0 ± 120°. Compatible with 3-circuit system.

Code	Name	Product
1459161	UNIPRO TA3AW	T-piece, white (earthing A)
1459162	UNIPRO TA3BW	T-piece, white (earthing B)
1459163	UNIPRO TA3CW	T-piece, white (earthing C)
1459164	UNIPRO TA3DW	T-piece, white (earthing D)
1459261	UNIPRO TA3AG	T-piece, grey (earthing A)
1459262	UNIPRO TA3BG	T-piece, grey (earthing B)
1459263	UNIPRO TA3CG	T-piece, grey (earthing C)
1459264	UNIPRO TA3DG	T-piece, grey (earthing D)
1459361	UNIPRO TA3AB	T-piece, black (earthing A)
1459362	UNIPRO TA3BB	T-piece, black (earthing B)
1459363	UNIPRO TA3CB	T-piece, black (earthing C)
1459364	UNIPRO TA3DB	T-piece, black (earthing D)

Power supply option. Select the correct earthing option. Screw terminals for 3x1,5mm² - 5x2,5mm² wires. Compatible with 3-circuit system.

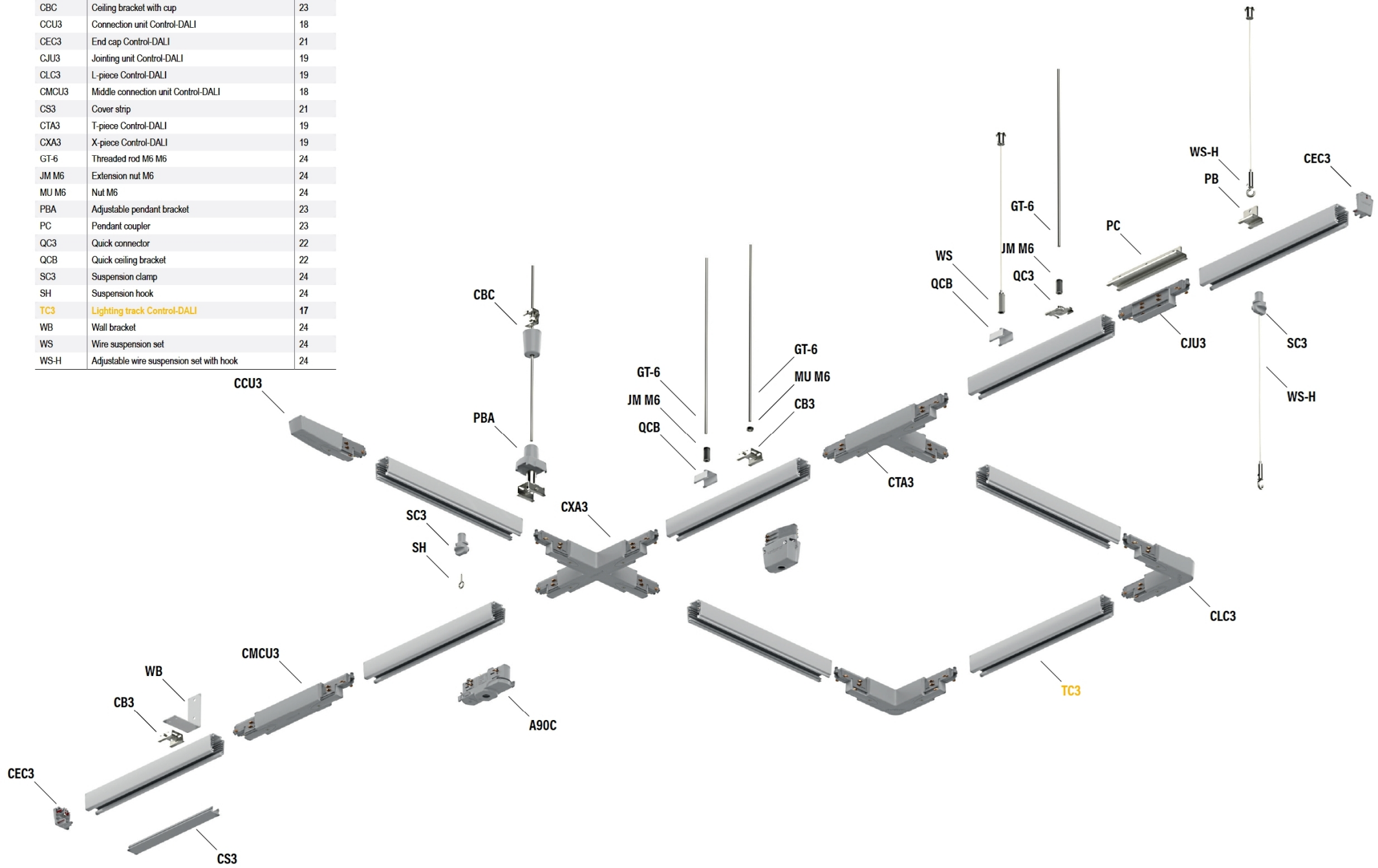
X-unit unipro® XA3

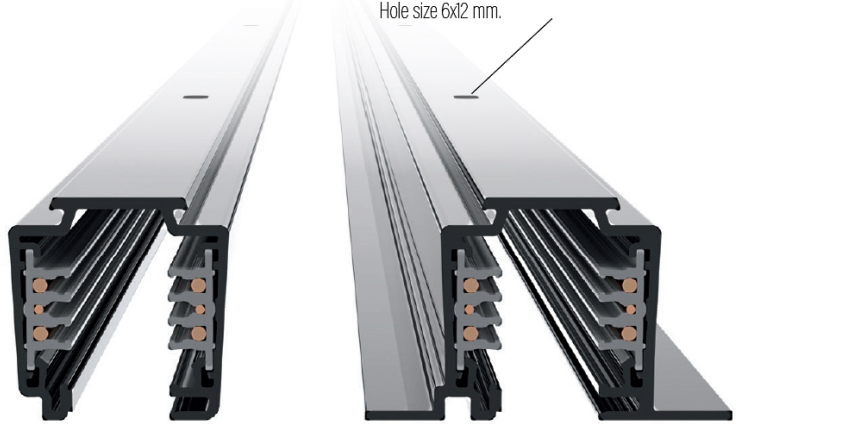


Code	Name	Product
1459171	UNIPRO XA3W	X-piece, white
1459271	UNIPRO XA3G	X-piece, grey
1459371	UNIPRO XA3B	X-piece, black

Power supply option. Screw terminals for 3x1,5mm² - 5x2,5mm² wires. Compatible with 3-circuit system.

Name	Product	Page
A90C	Luminaire adapter	31
CB3	Ceiling bracket	22
CBC	Ceiling bracket with cup	23
CCU3	Connection unit Control-DALI	18
CEC3	End cap Control-DALI	21
CJU3	Joining unit Control-DALI	19
CLC3	L-piece Control-DALI	19
CMCU3	Middle connection unit Control-DALI	18
CS3	Cover strip	21
CTA3	T-piece Control-DALI	19
CXA3	X-piece Control-DALI	19
GT-6	Threaded rod M6 M6	24
JM M6	Extension nut M6	24
MU M6	Nut M6	24
PBA	Adjustable pendant bracket	23
PC	Pendant coupler	23
QC3	Quick connector	22
QCB	Quick ceiling bracket	22
SC3	Suspension clamp	24
SH	Suspension hook	24
TC3	Lighting track Control-DALI	17
WB	Wall bracket	24
WS	Wire suspension set	24
WS-H	Adjustable wire suspension set with hook	24



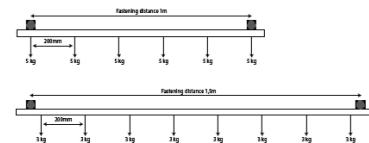


Features

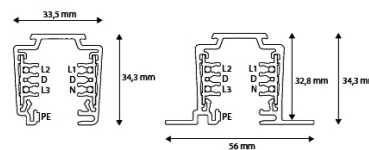
unipro® lighting tracks Control-DALI

Materials	The track's frame material is extruded aluminium. The insulation profiles inside the frame are plastic. The phase and neutral conductors are 4 mm ² round copper, the control conductors are 1,5 mm ² round copper. The earth contact is cut on the aluminium frame. The material of the plastic accessories is self-extinguishing polycarbonate, class V0. The surface treatment alternatives are powder-coated white (RAL9010), grey (RAL 7040), black (RAL9005) and anodised natural colour. All other painted RAL-colours and Decoral®-coatings are available by special order.
Conductors	Three phase conductors (L1, L2 ja L3), neutral (N) and ground (PE).
Protection class	Protection class 1 IP20.
Other	Can be cut on site to suitable dimensions. After cutting, phase conductors must be shortened with 5mm with the TCCP copper cutoff pliers.
Quality and safety	Tested in accordance with the standards EN60570 and EN60598.

Load-bearing capacity:



Profile dimensions:



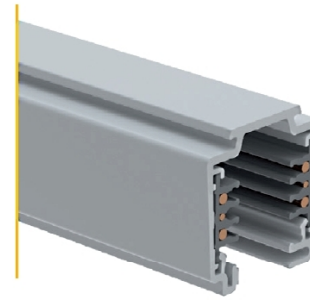
Copper cutting pliers unipro® TCCP Control-DALI



Code	Name	Product
1459190	UNIPRO TCCP	Control-DALI Copper cutting pliers

Copper cutting pliers for Control-DALI phase conductors (L1, L2, L3, N), which needs to be shortened 5mm after cutting the lighting track.

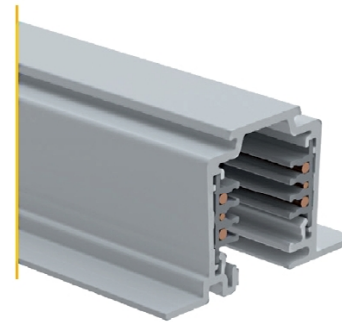
Surface 3-phase lighting tracks Control-DALI



Code	Name	Product
1459107	UNIPRO TC32W	Control-DALI 3-phase lighting track, white, 2 meters (surface)
1459108	UNIPRO TC33W	Control-DALI 3-phase lighting track, white, 3 meters (surface)
1459109	UNIPRO TC34W	Control-DALI 3-phase lighting track, white, 4 meters (surface)
1459237	UNIPRO TC32G	Control-DALI 3-phase lighting track, grey, 2 meters (surface)
1459238	UNIPRO TC33G	Control-DALI 3-phase lighting track, grey, 3 meters (surface)
1459239	UNIPRO TC34G	Control-DALI 3-phase lighting track, grey, 4 meters (surface)
1459307	UNIPRO TC32B	Control-DALI 3-phase lighting track, black, 2 meters (surface)
1459308	UNIPRO TC33B	Control-DALI 3-phase lighting track, black, 3 meters (surface)
1459309	UNIPRO TC34B	Control-DALI 3-phase lighting track, black, 4 meters (surface)
1459207	UNIPRO TC32AD	Control-DALI 3-phase lighting track, anodised, 2 meters (surface)
1459208	UNIPRO TC33AD	Control-DALI 3-phase lighting track, anodised, 3 meters (surface)
1459209	UNIPRO TC34AD	Control-DALI 3-phase lighting track, anodised, 4 meters (surface)

16 A | 250/400 VAC | 50 Hz | FELV ≤50VAC ≤1A | CLASS 1 | IP20

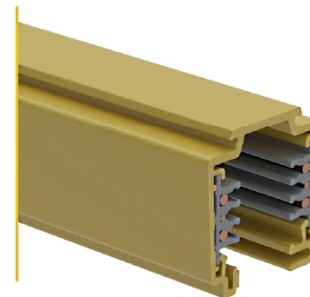
Recessed 3-phase lighting tracks Control-DALI



Code	Name	Product
1459117	UNIPRO TC32FW	Control-DALI 3-phase lighting track, white, 2 meters (recessed)
1459118	UNIPRO TC33FW	Control-DALI 3-phase lighting track, white, 3 meters (recessed)
1459119	UNIPRO TC34FW	Control-DALI 3-phase lighting track, white, 4 meters (recessed)
1459187	UNIPRO TC32FG	Control-DALI 3-phase lighting track, grey, 2 meters (recessed)
1459188	UNIPRO TC33FG	Control-DALI 3-phase lighting track, grey, 3 meters (recessed)
1459189	UNIPRO TC34FG	Control-DALI 3-phase lighting track, grey, 4 meters (recessed)
1459317	UNIPRO TC32FB	Control-DALI 3-phase lighting track, black, 2 meters (recessed)
1459318	UNIPRO TC33FB	Control-DALI 3-phase lighting track, black, 3 meters (recessed)
1459319	UNIPRO TC34FB	Control-DALI 3-phase lighting track, black, 4 meters (recessed)
1459217	UNIPRO TC32FAD	Control-DALI 3-phase lighting track, anodised, 2 meters (recessed)
1459218	UNIPRO TC33FAD	Control-DALI 3-phase lighting track, anodised, 3 meters (recessed)
1459219	UNIPRO TC34FAD	Control-DALI 3-phase lighting track, anodised, 4 meters (recessed)

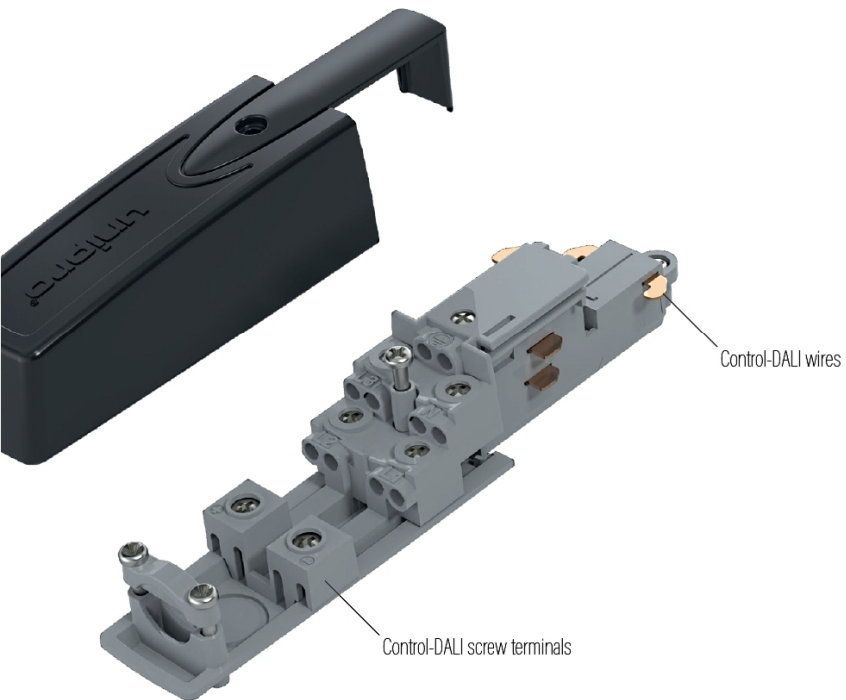
16 A | 250/400 VAC | 50 Hz | FELV ≤50VAC ≤1A | CLASS 1 | IP20

Painted (RAL) and coated (Decoral®) 3-phase lighting tracks Control-DALI

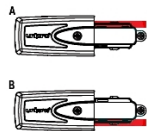


Code	Name	Product
1459137	UNIPRO TC32D	Control-DALI 3-phase lighting track, decoral®, 2 meters (surface)
1459138	UNIPRO TC33D	Control-DALI 3-phase lighting track, decoral®, 3 meters (surface)
1459139	UNIPRO TC34D	Control-DALI 3-phase lighting track, decoral®, 4 meters (surface)
1459147	UNIPRO TC32S	Control-DALI 3-phase lighting track, colored RAL, 2 meters (surface)
1459148	UNIPRO TC33S	Control-DALI 3-phase lighting track, colored RAL, 3 meters (surface)
1459149	UNIPRO TC34S	Control-DALI 3-phase lighting track, colored RAL, 4 meters (surface)
1459177	UNIPRO TC32FS	Control-DALI 3-phase lighting track, colored RAL, 2 meters (recessed)
1459178	UNIPRO TC33FS	Control-DALI 3-phase lighting track, colored RAL, 3 meters (recessed)
1459179	UNIPRO TC34FS	Control-DALI 3-phase lighting track, colored RAL, 4 meters (recessed)

16 A | 250/400 VAC | 50 Hz | FELV ≤50VAC ≤1A | CLASS 1 | IP20



Connection unit unipro® CCU3 Control-DALI



Code	Name	Product
1459125	UNIPRO CCU3AW	Control-DALI Connection unit, white (earthing A)
1459126	UNIPRO CCU3BW	Control-DALI Connection unit, white (earthing B)
1459225	UNIPRO CCU3AG	Control-DALI Connection unit, grey (earthing A)
1459226	UNIPRO CCU3BG	Control-DALI Connection unit, grey (earthing B)
1459325	UNIPRO CCU3AB	Control-DALI Connection unit, black (earthing A)
1459326	UNIPRO CCU3BB	Control-DALI Connection unit, black (earthing B)

Power supply option. Select the correct earthing option. Screw terminals for 1,5mm² - 2,5mm² wires. Compatible with Control-DALI system.

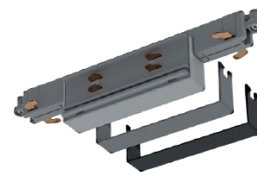
Middle connection unit unipro® CMCU3 Control-DALI



Code	Name	Product
1459129	UNIPRO CMCU3W	Control-DALI Middle connection unit, white
1459228	UNIPRO CMCU3G	Control-DALI Middle connection unit, grey
1459335	UNIPRO CMCU3B	Control-DALI Middle connection unit, black

Power supply option. Screw terminals for 1,5mm² - 2,5mm² wires. Compatible with Control-DALI system.

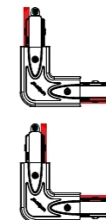
Joining unit unipro® CJU3 Control-DALI



Code	Name	Product
1459198	UNIPRO CJU3	Control-DALI Joining unit

Joining unit for unipro® -TC3 series Control-DALI lighting tracks. Product comes with grey and black covers, cover can be installed by pressing it on top of the joining unit. Compatible with Control-DALI system.

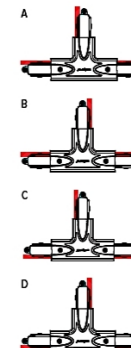
L-piece unipro® CLC3 Control-DALI



Code	Name	Product
1459153	UNIPRO CLC3W	Control-DALI L-piece, white
1459245	UNIPRO CLC3G	Control-DALI L-piece, grey
1459345	UNIPRO CLC3B	Control-DALI L-piece, black

Power supply option. The earthing line position can be changed on site, by screwing the lid open, turning the frame by 180°, and by screwing the lid back on. Screw terminals for 1,5mm² - 2,5mm² wires. Compatible with Control-DALI system.

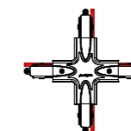
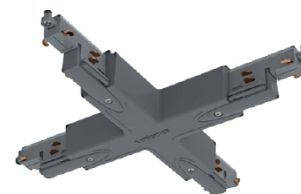
T-piece unipro® CTA3 Control-DALI



Code	Name	Product
1459155	UNIPRO CTA3AW	Control-DALI T-piece, white (earthing A)
1459156	UNIPRO CTA3BW	Control-DALI T-piece, white (earthing B)
1459157	UNIPRO CTA3CW	Control-DALI T-piece, white (earthing C)
1459158	UNIPRO CTA3DW	Control-DALI T-piece, white (earthing D)
1459255	UNIPRO CTA3AG	Control-DALI T-piece, grey (earthing A)
1459256	UNIPRO CTA3BG	Control-DALI T-piece, grey (earthing B)
1459257	UNIPRO CTA3CG	Control-DALI T-piece, grey (earthing C)
1459258	UNIPRO CTA3DG	Control-DALI T-piece, grey (earthing D)
1459355	UNIPRO CTA3AB	Control-DALI T-piece, black (earthing A)
1459356	UNIPRO CTA3BB	Control-DALI T-piece, black (earthing B)
1459357	UNIPRO CTA3CB	Control-DALI T-piece, black (earthing C)
1459358	UNIPRO CTA3DB	Control-DALI T-piece, black (earthing D)

Power supply option. Select the correct earthing option. Screw terminals for 1,5mm² - 2,5mm² wires. Compatible with Control-DALI system.

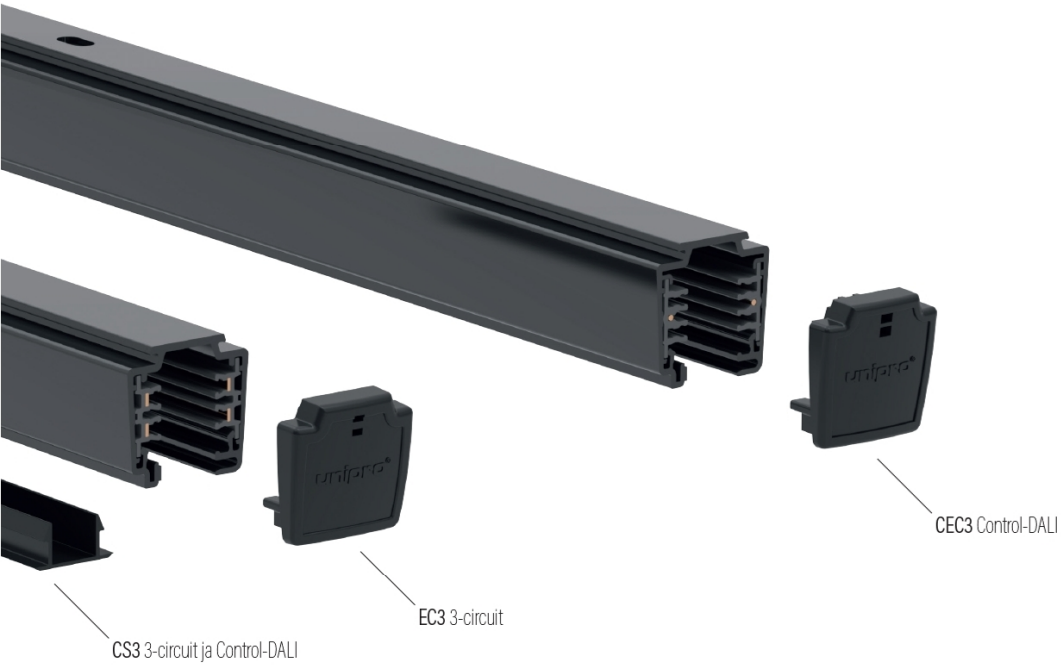
X-piece unipro® CXA3 Control-DALI



Code	Name	Product
1459167	UNIPRO CXA3W	Control-DALI X-piece, white
1459275	UNIPRO CXA3G	Control-DALI X-piece, grey
1459375	UNIPRO CXA3B	Control-DALI X-piece, black

Power supply option. Screw terminals for 1,5mm² - 2,5mm² wires. Compatible with Control-DALI system.

Perfect installations



End cap unipro® EC3



Code	Name	Product
1459181	UNIPRO EC3W	End cap, white
1459281	UNIPRO EC3G	End cap, grey
1459381	UNIPRO EC3B	End cap, black

End cap for T3-lighting tracks. Compatible with 3-circuit system.

End cap unipro® CEC3 Control-DALI



Code	Name	Product
1459196	UNIPRO CEC3W	Control-DALI End cap, white
1459285	UNIPRO CEC3G	Control-DALI End cap, grey
1459385	UNIPRO CEC3B	Control-DALI End cap, black

End cap for TC3-lighting tracks. Compatible with Control-DALI system.

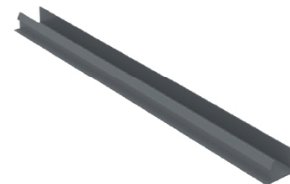
Cover plate unipro® CP3



Code	Name	Product
1459191	UNIPRO CP3W	Cover plate, white
1459291	UNIPRO CP3G	Cover plate, grey
1459391	UNIPRO CP3B	Cover plate, black

Cover plates are used in recessed lighting track systems, to cover the CU and MCU connection units, and the L-, T- and X-pieces. The cover plate can be folded to the shape suitable for covering the parts to be hidden. Compatible with 3-circuit system.

Cover strip unipro® CS3

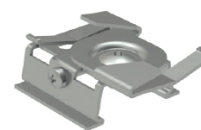


Code	Name	Product
1459444	UNIPRO CS3W	Cover strip, white
1459445	UNIPRO CS3B	Cover strip, black

Cover strip for unipro® lighting tracks. Length 2m.



Ceiling bracket unipro® CB3 T-BAR



Code	Name	Product
1459451	UNIPRO CB3W T-BAR	Ceiling bracket for T-bar, white
1459452	UNIPRO CB3G T-BAR	Ceiling bracket for T-bar, grey
1459453	UNIPRO CB3B T-BAR	Ceiling bracket for T-bar, black

Steel. Can be attached directly to 24mm T-bar. Pull strength 50 N (5kg). Compatible with 3-circuit / Control-DALI systems.

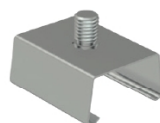
Pendant bracket unipro® PB



Code	Name	Product
1459407	UNIPRO PB W	Pendant bracket, white
1459408	UNIPRO PB G	Pendant bracket, grey
1459409	UNIPRO PB B	Pendant bracket, black

Steel. Can be used with the hooked wire suspension set WS40H, or just with wires. Pull strength 200 N (20kg). Compatible with 3-circuit / Control-DALI systems.

Quick ceiling bracket unipro® QCB



Code	Name	Product
1459421	UNIPRO QCB W	Quick ceiling bracket, white
1459422	UNIPRO QCB G	Quick ceiling bracket, grey
1459423	UNIPRO QCB B	Quick ceiling bracket, black

Fast to install without tools. Can be used with the wire suspension set WS, and threaded rod GT-6 L=1000 EG with extension nut JM M6 EG. Pull strength 150 N (15kg). Compatible with 3-circuit / Control-DALI systems.

Pendant coupler unipro® PC



Code	Name	Product
1459431	UNIPRO PC W	Pendant coupler, white
1459432	UNIPRO PC G	Pendant coupler,, grey
1459433	UNIPRO PC B	Pendant coupler,, black

Steel. Recommended to be used where two tracks have been joined with the jointing unit JU3 or CIU3. Pull strength 200 N (20kg). Compatible with 3-circuit / Control-DALI systems.

Quick connector unipro® QC3



Code	Name	Product
1459100	UNIPRO QC3G	Quick connector

Fast to install without tools. Can be used with the wire suspension set WS, and threaded rod GT-6 L=1000 EG with extension nut JM M6 EG. Pull strength 80 N (8kg). Compatible with 3-circuit / Control-DALI systems.

Adjustable pendant bracket unipro® PBA



Code	Name	Product
1459404	UNIPRO PBA W	Adjustable pendant bracket, white
1459405	UNIPRO PBA G	Adjustable pendant bracket, grey
1459406	UNIPRO PBA B	Adjustable pendant bracket, black

Adjustment range 0-30mm. Can be used with the threaded rod GT-6 L=1000 EG. Pull strength 200 N (20kg). Compatible with 3-circuit / Control-DALI systems.

Ceiling bracket unipro® CB3



Code	Name	Product
1459401	UNIPRO CB3W	Ceiling bracket, white
1459402	UNIPRO CB3G	Ceiling bracket, grey
1459403	UNIPRO CB3B	Ceiling bracket, black

Steel. Can be used with the wire suspension set WS and the threaded rod GT-6 L=1000 EG. Pull strength 200 N (20kg). Compatible with 3-circuit / Control-DALI systems.

Ceiling bracket with cup unipro® CBC



Code	Name	Product
1459434	UNIPRO CBC W	Ceiling bracket with cup, white
1459435	UNIPRO CBC B	Ceiling bracket with cup, black

Can be used with the threaded rod GT-6 L=1000 EG. Pull strength 100 N (10kg). Compatible with 3-circuit / Control-DALI systems.

Wall bracket unipro® WB



Code	Name	Product
1459436	UNIPRO WB W	Wall bracket, white
1459437	UNIPRO WB B	Wall bracket, black

Steel. Recommended to be used with ceiling bracket CB3. Pull strength 30 N (3kg). Compatible with 3-circuit / Control-DALI systems.

Suspension clamp unipro® SC3 and suspension hook SH



Code	Name	Product
1459440	UNIPRO SC3W	Suspension clamp, white
1459441	UNIPRO SC3G	Suspension clamp, grey
1459442	UNIPRO SC3B	Suspension clamp, black

Code	Name	Product
1459443	UNIPRO SH	Suspension hook

SC3 pull strength 100 N (10kg), SH pull strength 10 N (1kg)

Wire suspension set unipro® WS



Code	Name	Product
1459410	UNIPRO WS15	Adjustable wire suspension set, length 1,5m
1459411	UNIPRO WS40	Adjustable wire suspension set, length 4,0m
1459412	UNIPRO WS60	Adjustable wire suspension set, length 6,0m
1459415	UNIPRO WS15 B	Adjustable wire suspension set, black, length 1,5m
1459416	UNIPRO WS40 B	Adjustable wire suspension set, black, length 4,0m
1459414	UNIPRO WS40H	Adjustable wire suspension set with hook, length 4,0m

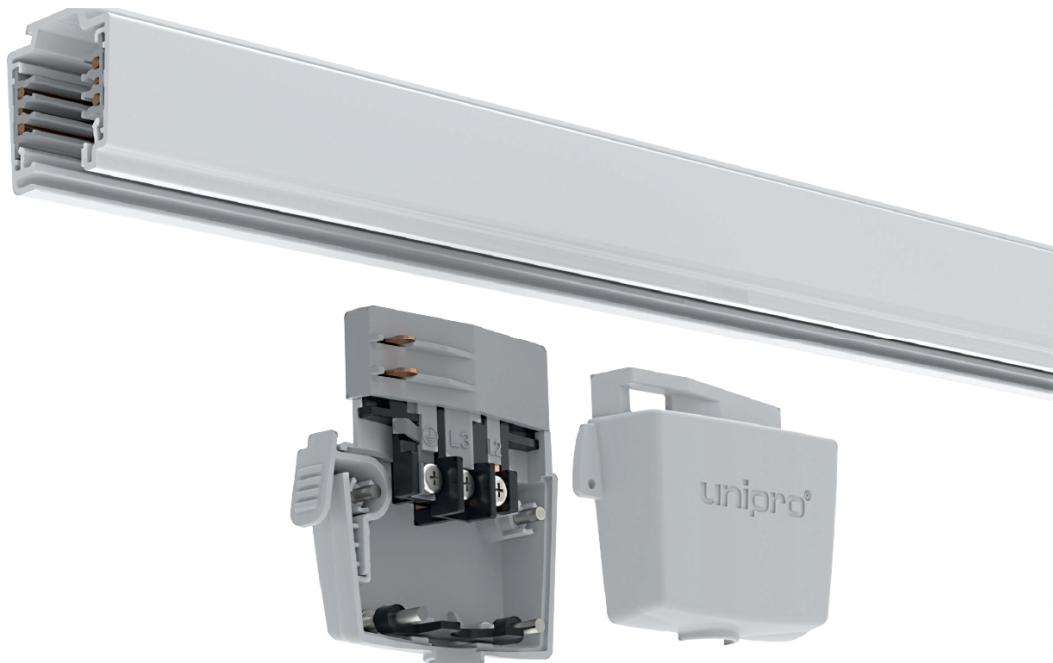
WS sets intended for the CB3, QC3 and QCB brackets. WS40H is intended for the PB and PC brackets. WS pull strength 150N (15kg), WS40H pull strength 100 N (10kg)

Other mounting equipment



Code	Name	Product
1459420	GT-6 L=1000 EG	Threaded rod M6, length 1,0m
1459426	SS-6 W	Plastic tube for the threaded rod M6, white
1459425	JM M6 EG	Extension nut for threaded rod M6
1459427	MU M6 EG	Electro-galvanised nut M6





Features

unipro® A100	
Rated values	16A / 250/400VAC / 50Hz
Protection class	1 IP20
Conductors	3x1,5 mm ² - 5x2,5 mm ²
Pull strenght	100N (10kg)
Casing material	Self-extinguishing polycarbonate, class V0.
Quality and safety	Tested according to standards EN60570 and EN60598.
A100 power take off adapter is used when connecting 1- or 3-circuit devices or luminaires to the unipro® lighting track. Compatible with the 3-circuit and DALI lighting tracks.	

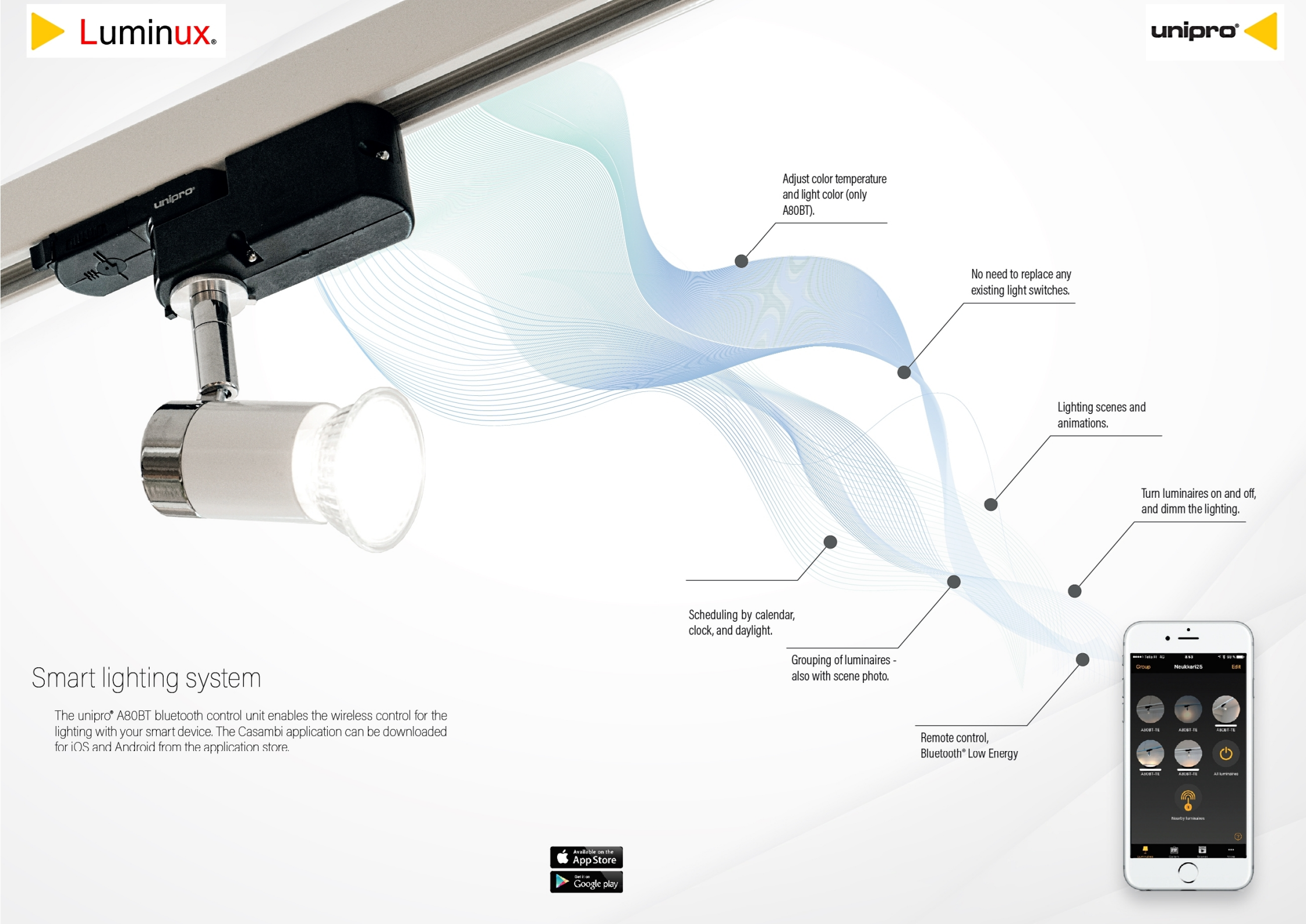
Power take-off unipro® A100



Code	Name	Product
1459011	UNIPRO A100W	Power take-off adapter, white
1459013	UNIPRO A100G	Power take-off adapter, grey
1459012	UNIPRO A100B	Power take-off adapter, black

Power take-off adapter is used when connecting 1- or 3-circuit devices or luminaires to the unipro® lighting track.





Adjust color temperature and light color (only A80BT).

No need to replace any existing light switches.

Lighting scenes and animations.

Turn luminaires on and off, and dimm the lighting.

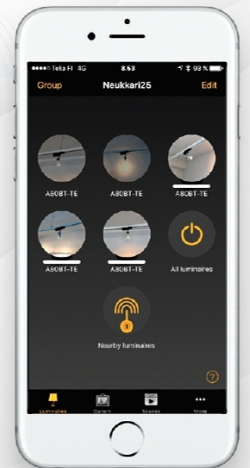
Scheduling by calendar, clock, and daylight.

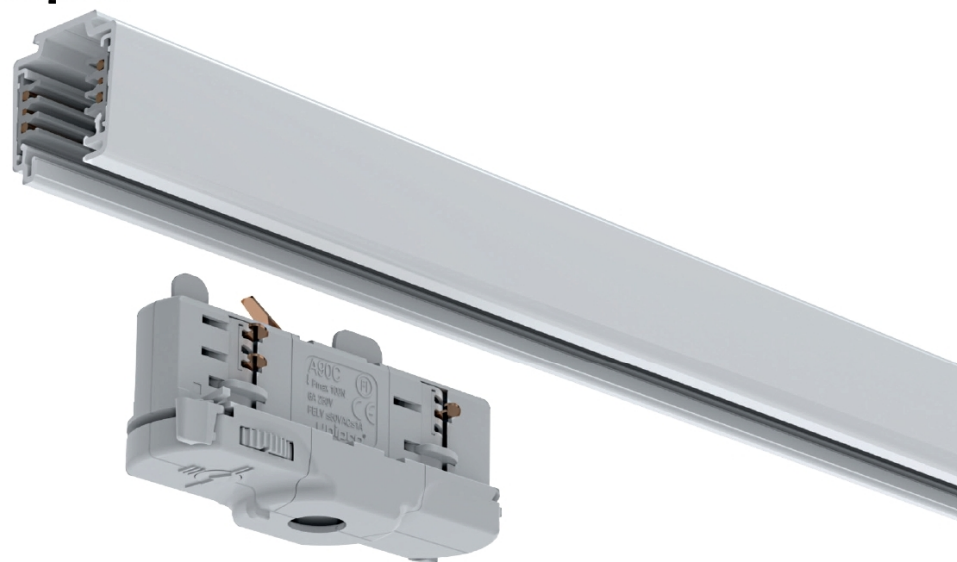
Grouping of luminaires - also with scene photo.

Remote control, Bluetooth® Low Energy

Smart lighting system

The unipro® A80BT bluetooth control unit enables the wireless control for the lighting with your smart device. The Casambi application can be downloaded for iOS and Android from the application store.





Features

unipro® A90

Rated values	6A / 250V
Protection class	1 IP20
Connecting wire	0,5 mm ² - 1,0 mm ²
Pull strength	100N (10kg)
Casing material	Self-extinguishing polycarbonate, class V0. Colors white RAL9010, grey RAL7040 and black RAL 9005.
Quality and safety	Tested in accordance with the standards EN60570 and EN60598.

A90 luminaire adapters are used mainly with spot lights. The luminaire adapters have been designed to be compatible with the most 3-circuit lighting tracks.

The adapters have a rotary dial for selecting the circuit.
It is easy to connect the wires by pressing them to the connectors with the unipro® TIL tools.
Connecting the wires does not require screws or peeling the wires.

unipro® A75

Rated values	6A, 250V
Protection class	1 IP20
Connecting wire	0,5 mm ² - 1,0 mm ²
Pull strength	50N (5kg), with locker 70N (7kg).
Casing material	Self-extinguishing polycarbonate, class V0.
Quality and safety	Tested in accordance with the standards EN60570 and EN60598.

unipro® luminaire adapters are used mainly with spot lights. The luminaire adapters have been designed to be compatible with the most 3-circuit lighting tracks.

The adapters have a rotary dial for selecting the circuit.
It is easy to connect the wires by pressing them to the connectors with the unipro® TIL tools.
Connecting the wires does not require screws or peeling the wires.

unipro® A90C Control-DALI

Rated values	6A / 250V - FELV <50VAC / <1A
Protection class	1 IP20
Connecting wire	0,5 mm ² - 1,0 mm ²
Pull strength	100N (10kg)
Casing material	Self-extinguishing polycarbonate, class V0. Colors white RAL9010, grey RAL7040 and black RAL 9005.
Quality and safety	Tested in accordance with the standards EN60570 and EN60598.

A90C luminaire adapters are used mainly with spot lights.

The adapters have a rotary dial for selecting the circuit.
It is easy to connect the wires by pressing them to the connectors with the unipro® TIL tools.
Connecting the wires does not require screws or peeling the wires.

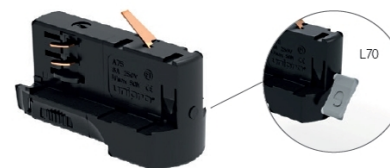
unipro® A80BT

A80BT	Light intensity adjustment, suitable for 0-10V.
A80BT	Light intensity adjustment, suitable for DALI.
A80BT	Colour temperature adjustment with matching luminaires.
A80BT-TE	Trailing edge dimming for matching luminaires.
A80BT / A80BT-TE	On/Off function.
A80BT / A80BT-TE	Wirelessly updated firmware.
A80BT / A80BT-TE	Automatically creates a mesh network between the devices.

The unipro® A80BT offers energy efficiency and adjustment options for lighting. It is suitable for use in a variety of environments such as shops, offices, and other public spaces. The A80BT is an affordable solution for wirelessly controlled lighting, the control unit does not require a separate server.

Can be installed to compatible halogen and LED luminaires.
Contains an easy-to-use control programme.
Quick to install to the new track systems, and add to the existing track systems.
Versatile light intensity and colour temperature control possible.
Compatible with all universal 3-circuit tracks.
The mesh technology enables easy control for even larger installations.
Compatible with Android and iOS devices with Bluetooth 4.0 support.
Password protected: outsiders cannot access the network.

Luminaire adapter unipro® A75



Luminaire adapter unipro® A90



Luminaire adapter unipro® A90C Control-DALI



Bluetooth control unit unipro® A80BT



Code	Name	Product
1459014	UNIPRO A75W	Luminaire adapter, white
1459016	UNIPRO A75G	Luminaire adapter, grey
1459015	UNIPRO A75B	Luminaire adapter, black

Code	Name	Product
1459004	UNIPRO L70W	Locker for luminaire adapter A75, white
1459006	UNIPRO L70G	Locker for luminaire adapter A75, grey
1459005	UNIPRO L70B	Locker for luminaire adapter A75, black

Rated values: 6A, 250V | Pull strength 50 N (5kg), with L70 locker 70 N (7kg).
Compatible with 3-circuit system.

Code	Name	Product
1459029	UNIPRO A90W	Luminaire adapter, white
1459031	UNIPRO A90G	Luminaire adapter, grey
1459030	UNIPRO A90B	Luminaire adapter, black

Rated values: 6A, 250V | Pull strength 100 N (10kg). Compatible with 3-circuit system.

Code	Name	Product
1459026	UNIPRO A90CW	Control-DALI Luminaire adapter, white
1459028	UNIPRO A90CG	Control-DALI Luminaire adapter, grey
1459027	UNIPRO A90CB	Control-DALI Luminaire adapter, black

Rated values: 6A, 250V | FELV ≤50VAC ≤1A | Pull strength 100 N (10kg). Compatible with Control-DALI system.

Code	Name	Product
1459017	UNIPRO A80BT W	Bluetooth control unit, white
1459019	UNIPRO A80BT G	Bluetooth control unit, grey
1459018	UNIPRO A80BT B	Bluetooth control unit, black
1459020	UNIPRO A80BT-TE W	Bluetooth control unit, white
1459022	UNIPRO A80BT-TE G	Bluetooth control unit, grey
1459021	UNIPRO A80BT-TE B	Bluetooth control unit, black

Rated values: Pmax=70W, 240V | Pull strength 50 N (5kg).

Tools and equipment

Nipple ALN



NM10



CC70



T1L



Code	Name	Product
1459091	UNIPRO ALN10R8	AL-nipple M10, rotating, thread length 8mm
1459092	UNIPRO ALN10R12	AL-nipple M10, rotating, thread length 12mm

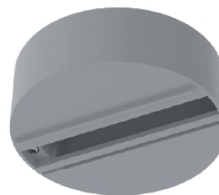
Code	Name	Product
1459428	UNIPRO NM10	Counter nut for AL-nipple

Code	Name	Product
1459010	UNIPRO CC70	Cable clamp

Code	Name	Product
1459099	UNIPRO T1L	Tool



unipro® Monopoint



Features

unipro® MP	
Rated values	10A / 250VAC / 50Hz
Protection class	1 IP20
Connecting wire	3x1,5 mm ²
Pull strength	50N (5kg)
Casing material	Self-extinguishing polycarbonate, class V0.
Quality and safety	Tested in accordance with the standards EN60570 and EN60598.
unipro® Monopoint is suitable for A75 luminaire adapters. Monopoint enables spotlight installations exactly where they are needed.	

Code	Name	Product
1459040	UNIPRO MP W	Ceiling adapter for adapter, white
1459042	UNIPRO MP G	Ceiling adapter for adapter, grey
1459041	UNIPRO MP B	Ceiling adapter for adapter, black

Rated values: 10A, 250V | Pull strength 50 N (5kg)

"The black wire suspension set unipro® WS40B completes the unipro® lighting track family gracefully. Black wire suspension set was realised upon a customer request, and is today a standard choice for darker ceiling installations."

"unipro® lighting tracks are used innovatively also purely for visual needs. At the rest area Niemenharju the lighting tracks circle beautifully each acoustic panel in the ceiling. The end result lights up the station appearance to a magnificent entirety."



Puustelli kitchen store

Historical building shines dignity and the interior lightning was renewed to respond to the high quality Puustelli kitchen materials, as well as to light up their beautiful angles and details. At the Puustelli store, the model kitchens contain something new, fashionably old, romantic, white, dark as well as bright colors. The modern unipro® lighting tracks bring forth the right atmosphere to these in the best possible way.



The rest area Niemenharju

DesignCurial, the British architectural and design site, has announced Niemenharju filling station to be the most beautiful gas station in 2017. The interior design at Niemenharju petrol station has received its inspiration from its natural surroundings, which it brilliantly completes. White unipro® lighting tracks circle gracefully the high ceiling inside the station.